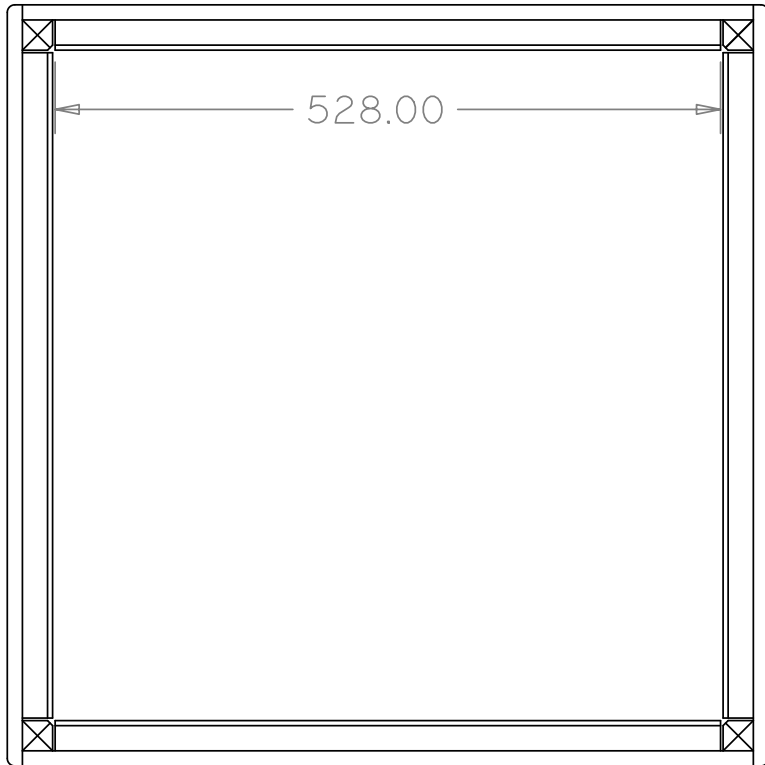
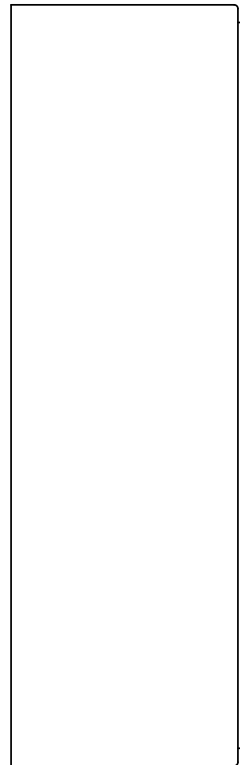


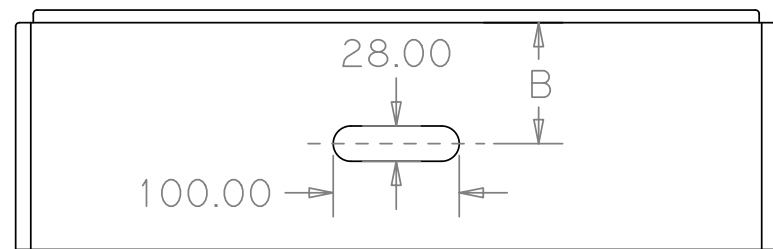
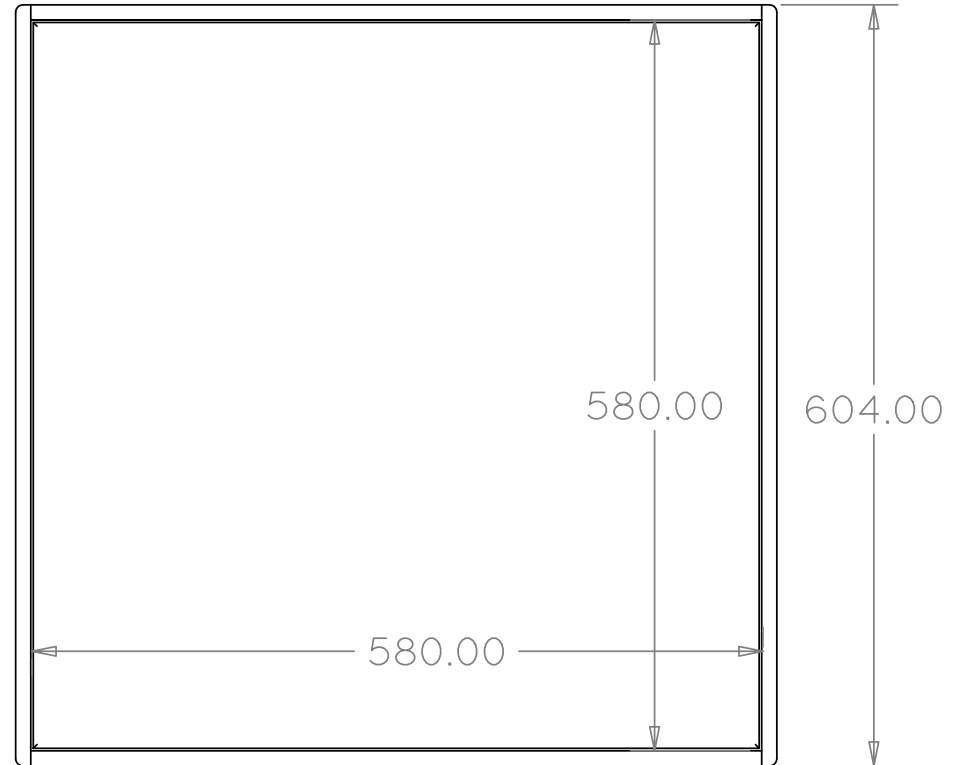
Base elevation



Front



Plan



Side elevation

Notes.

- 4 mm bevel on exposed edges of all angle block.
- 3mm (1/8") round over on all external horizontal edges.
- 6mm (1/4") round over on external vertical edges.
- Edge of top is rebated by 2mm all round.
- 3mm (1/8") round over on all edges of handle openings.

Set of 8 ringing boxes.	
Assembly view.	
Page 3 of 4.	
Drawn by W David Roskelly.	
Revision 2.	12/07/2020